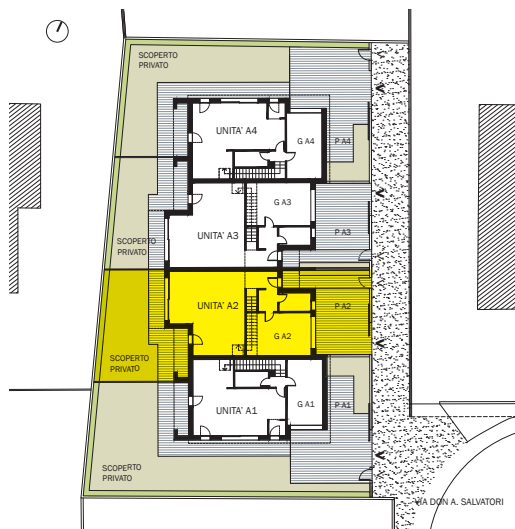
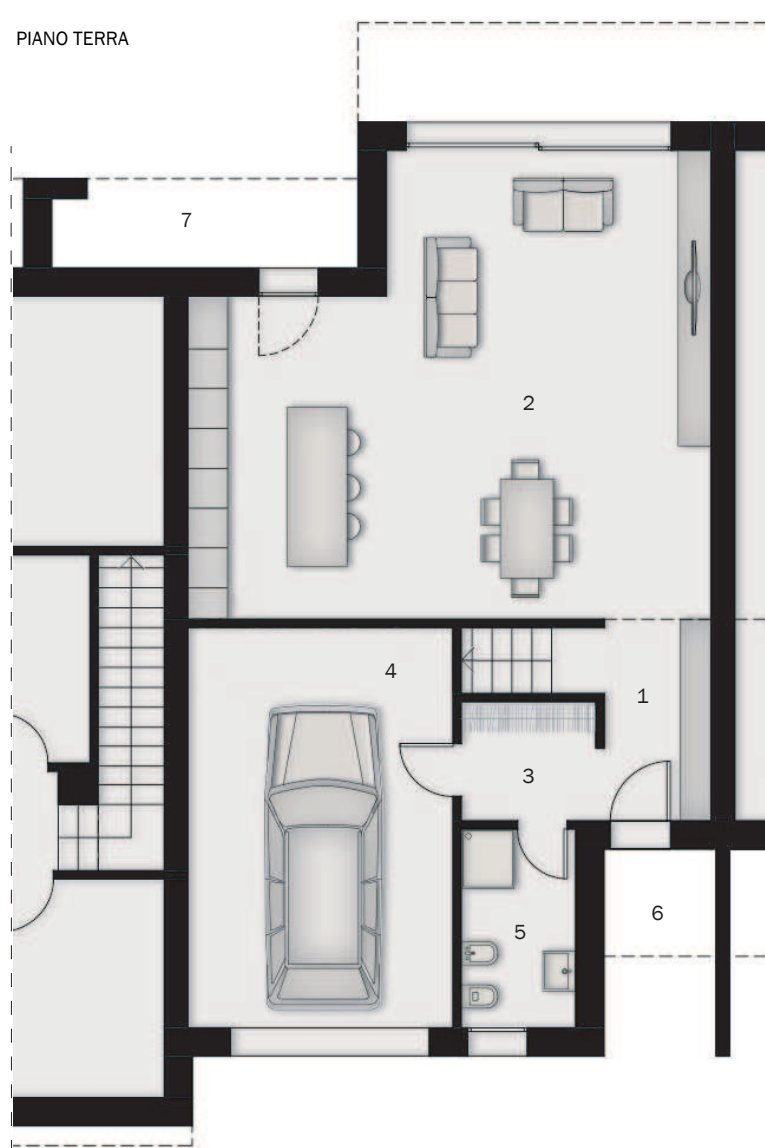


# RESIDENCE VILLA DEL BOSCO

VILLA DI TIPOLOGIA QUADRIFAMILIARE - San Biagio di Teolo



PIANO TERRA



## PIANO TERRA

1	INGRESSO	5,70	m <sup>q</sup>
2	ZONA GIORNO	49,21	m <sup>q</sup>
3	DISIMPEGNO	3,78	m <sup>q</sup>
4	GARAGE	24,60	m <sup>q</sup>
5	BAGNO	5,19	m <sup>q</sup>
6	PORTICO	2,74	m <sup>q</sup>
7	PORTICO	6,06	m <sup>q</sup>

## PRIMO PIANO

8	DISIMPEGNO	9,06	m <sup>q</sup>
9	BAGNO	4,01	m <sup>q</sup>
10	CAMERA	9,72	m <sup>q</sup>
11	BAGNO	5,10	m <sup>q</sup>
12	CAMERA	14,53	m <sup>q</sup>
13	CAMERA	10,09	m <sup>q</sup>
14	TERRAZZO	7,08	m <sup>q</sup>

TOTALE 156 m<sup>q</sup> comm.

# UNITÀ A2

PIANO PRIMO

